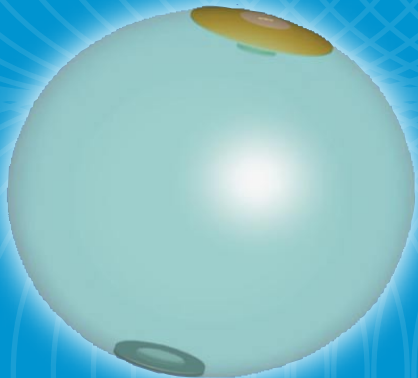


Weight loss after the implantation of the intragastric balloon device

It is anticipated that the reduction of weight will be gradual (2kg-4kg per month). Although the Intragastric Balloon Device reduces appetite and fills a large proportion of the stomach, regular ingestion of fatty food or highly sugared soft drinks can impede weight loss, as they pass easily past the Intragastric Balloon.

HELIOSPHERE®

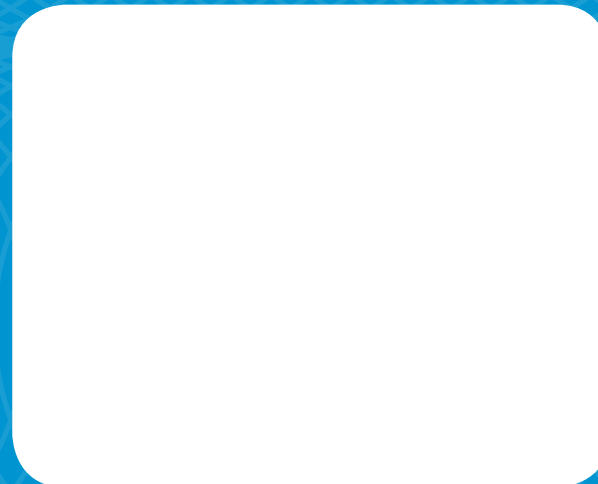


IMPORTANT

This is a brief outline of the Intragastric Balloon procedure. Not all contraindications, warnings or adverse events are included; these should be discussed with your treating Surgeon or Gastroenterologist.

The Helioscopie Intragastric Balloon Device is constructed of polymer covered with a deflated silicone envelope. The double bagged air filled Intragastric Balloon is not designed for life long implantation.

CONTACT



Intragastric Balloon Device Non Surgical Treatment for Obesity

HELIOSPHERE®



MEDICAL IMPLANTS
helioscopie

Rue des Freses Lumiere – ZA du Chateau de Malissol
BP 385 – F38205 Vienne Cedex (France)

IN AUSTRALIA

Matrix Surgical Company
117a Station Street, Malvern, Victoria, 3144
Telephone: +61 (0) 3 9500 1888
Facsimile: +61 (0) 3 9500 1071
www.matrixsurgical.com.au

MEDICAL IMPLANTS
helioscopie

HELIOSPHERE®

Heliosphere is a solution for patients suffering from obesity and whose condition does not justify a surgical intervention

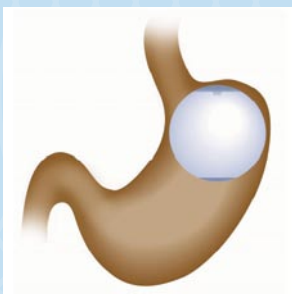
Intragastric Balloon

The procedure involves placing a balloon in the stomach and then inflating it with air. It is a non-surgical, gastroscopic procedure performed under light sedation and is suitable for patients whose condition does not justify surgery or if surgery is thought to be too risky.

The Intragastric Balloon is a temporary intervention which is left in the stomach for 6 months. During this time there is a sensation of fullness after small amounts of food which enables the patient to modify their food intake and so reduce weight. It also allows for better eating patterns to be re-enforced to aid long term weight maintenance.

After 6 months the balloon is removed in a 20 minute procedure similar to that of placement.

There is very little patient discomfort and the patient can return home as soon as the light sedation has worn off.



What Is Obesity?

Obesity is unhealthy excess weight and is the most common medical problem in the western world.

Obesity is associated with a reduced life expectancy and an increased risk of cardiovascular disease. The co-morbidities associated with obesity include Diabetes (Type 2), High Blood Pressure and High Cholesterol. Obesity is also associated with Asthma, Osteoarthritis, Sleep Apnoea and Depression.

The measurement of obesity is calculated by dividing weight in kilograms by height in metres squared.

A healthy body mass index is between 20-25.

BMI Classifications

| Weight Status | BMI |
|-----------------|---------|
| Overweight | 25 - 30 |
| Obese | 30 - 35 |
| Seriously Obese | 35 - 40 |
| Morbidly Obese | 40 + |

Who Can Be Considered?

1. Patients of any age who are capable of understanding and adhering to the restrictions on food intake associated with the balloon. The usual age range is 18-65 years, however patients outside this range can be considered.

2. Patients with significant obesity (BMI>30) and associated co-morbidities who have not responded to simple lifestyle interventions.
3. Patients who are prepared to make changes and are committed to on-going monitoring by the treatment team.

It should not be used in patients with a history of gastro esophageal reflux surgery, esophageal varices or intestinal obstruction. It is not recommended in pregnancy or during breast feeding.

Are There Any Problems?

1. Initially patients experience nausea, vomiting and/or abdominal pain which may require medical treatment. Symptoms usually settle within 2-7 days and are variable in severity.
2. On-going vomiting and dehydration needs to be avoided as patients can get electrolyte disturbances and renal insufficiency.
3. Patients with an air-filled balloon must not undertake scuba diving or travel in an un-pressurized airplane cabin.
4. Intestinal obstruction requiring surgery can occur if the balloon partially deflates. This risk is minimized by balloon removal within the 6 month maximum period.